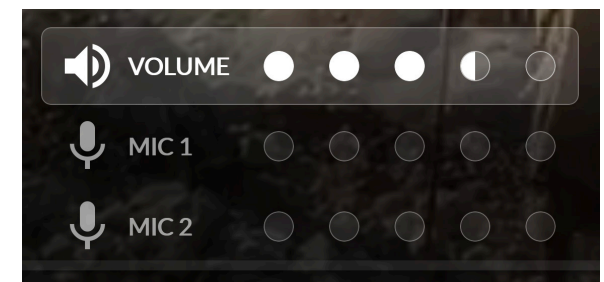
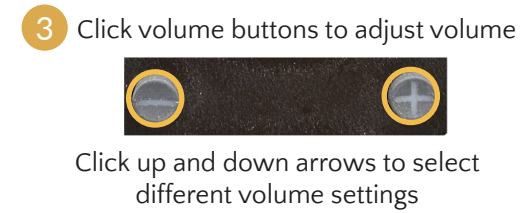
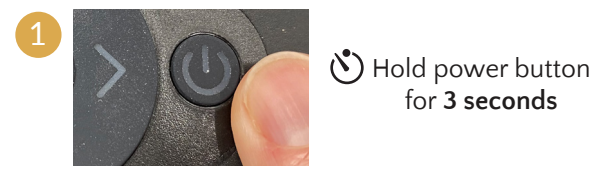
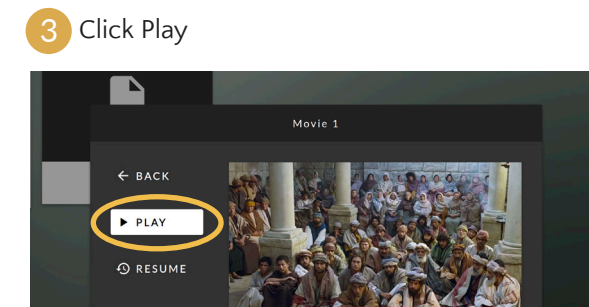
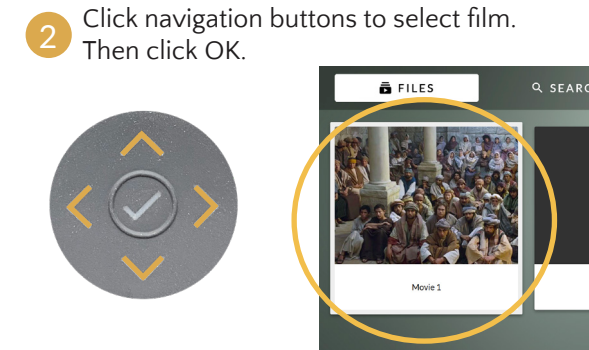
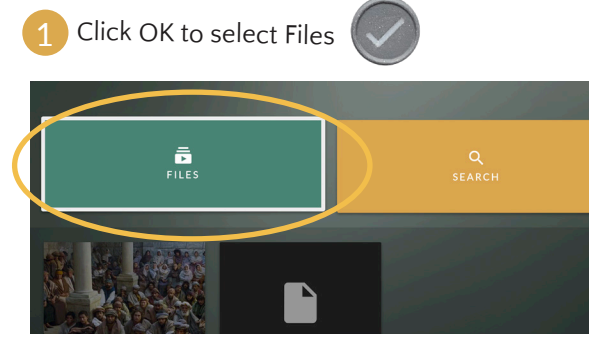



## SET UP & POWER ON

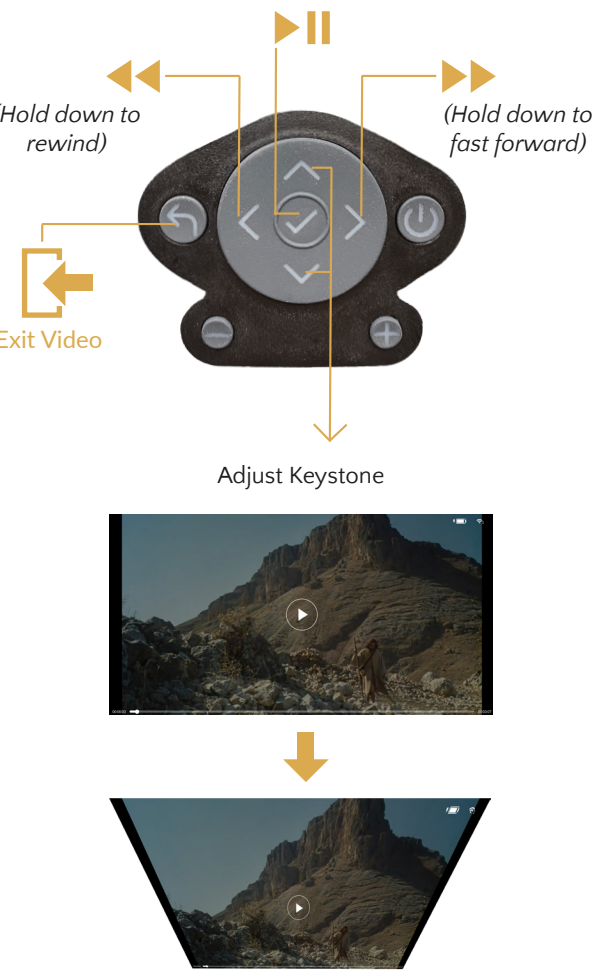


## SELECT MEDIA

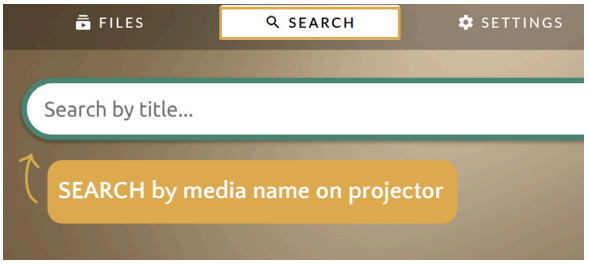


VERSION 20230221  
 Input: 16.8V 4.0A  
 Capacity: 7800mAh 11.1V / 86.58Wh  
  
 MADE IN CHINA  
 Warning: Batteries should not be exposed to excessive heat such as sunshine or fire.

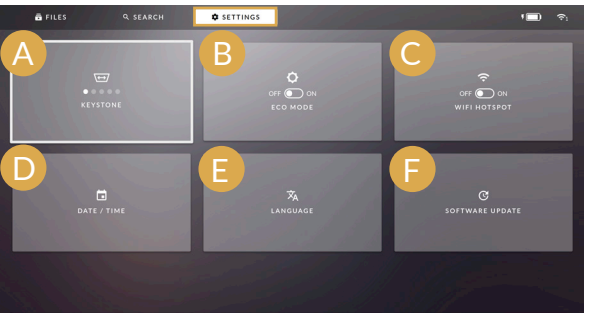
## PLAY MEDIA



## SEARCH



## SETTINGS



- A** Keystone Settings
- B** Normal Battery Life: 3.5 hrs
- C** Turn WIFI hotspot on/off to access Gospel media
- D** Set Date / Time
- E** Change language of projector menu
- F** Instructions for software update

## CHARGING

### A/C CHARGING (WALL PLUG)

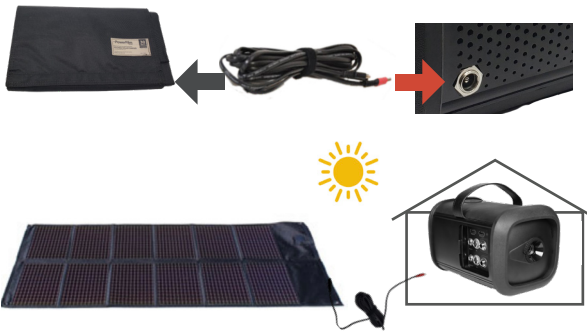
Use the charging adapter to plug the projector into a wall plug.



Charge Time = About 3.5 hours to full  
Normal Runtime = 3.5 hours

### SOLAR CHARGING

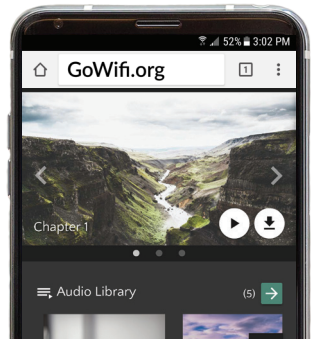
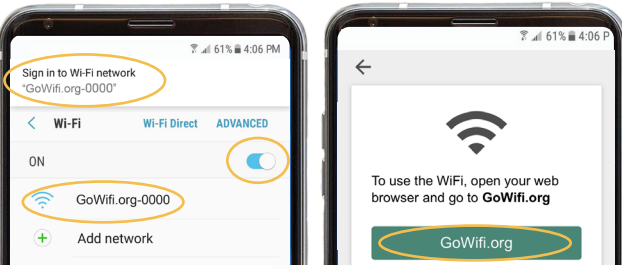
Connect the solar panel cable to the projector & the solar panel. Charge for a full day in direct sun.



**Warning:** Do not put projector in direct sunlight

## WIFI HOTSPOT

- 1 Connect to Wifi\*\*
- 2 View login popup



- 3 Open web browser & go to: **GoWifi.org**

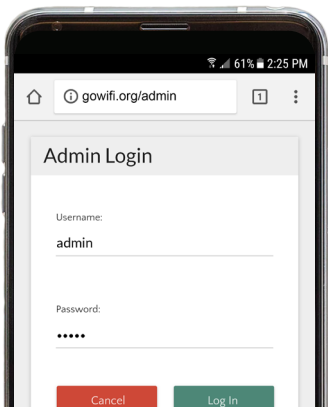
\*\*If the the Wifi network didn't appear in Step 1, go to the "Settings" menu on the projector and make sure the WiFi Hot Spot is "ON"

## WIFI ADMIN SETTINGS

In web browser, navigate to:

**url:** GoWifi.org/admin  
**Username:** admin\*  
**Password:** admin\*

\*Default username and password can be changed



# QUICK START

